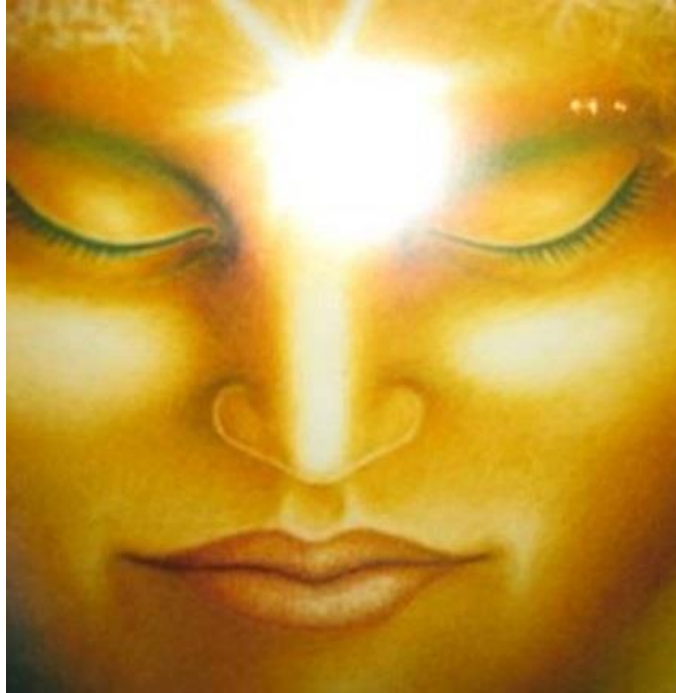


TAURUS

“Taurus – The Penetrating Light of the Path”

“This is a beam of light, streaming forth from the point in Aries, and revealing the area of light control”. (EA, 328)

Key Word of the Soul: *“I SEE, and when the eye is opened, all is illumined.”* (EA, 653)



MEDITATION

I. “THE BREATH IS THE LIFE POURING THROUGH ALL THE CENTERS”

◇ We **SILENTLY** (or softly) **sound forth the sacred Word, OM, allowing its vibration to resonate through all the bodies and body centers ... as we move into the peaceful Presence of the Soul.**

◇ We consciously attune with the life energy of **Taurus pouring through the Heart of the Sun ... streaming into our Solar System as That in which we live, move, breathe and have our Being.** Standing in the down-flow of these Life energies, we breathe “the Breath of Life” of the Heart of the Sun/Son “pouring through all the Centers”... irradiating, infusing and suffusing the “whole Man”. **OM**

◇ With a conscious “Breath of Life pouring through all the Centers”, **AUDIBLY** sound forth the Sacred Word, **OM, dissolving and releasing atoms of lesser vibration** (visualize and sense their release).

◇ Now, with **conscious, intense spiritual Aspiration** (inwardly attuning as *high* as we can), breathe the "Breath of Life" **drawing in atoms of higher vibration**. **SILENTLY** sound the Sacred Word, pouring through all the Centers ... irradiating the mental body with light, infusing the emotional body with Love, suffusing the vital etheric body with life, feeling the Life balancing, healing and enlivening.

Let us realize that every intentional, **conscious Breath of Life with the OM sounding forth**, is a deeper, truer entry in the **True Soul**—providing a bridge for It's descent, the veils to It's Ever-Presence *dissolving, melting, dissipating or burning away the dross* – clearing the way for truer and fuller contact with Reality, further expanding True-Soul Consciousness.

◇ With a conscious Breath of Life, **AUDIBLY** sound forth the **Sacred Word, OM**, allowing solar-infused Taurean light to *extend into the vibratory field in which we live, move and have our being, heightening its vibration ... extending to all Humanity and the world*.

II. CONNECTING WITH THE SOLAR ANGEL and ANGEL Governing the PETAL of TAURUS

◇ *Continuing* with the "Breath of Life", let us bring our awareness to the Crown Center, a 1000-petalled lotus, within which is a "Twelve-petalled Heart" in the Crown. ◇ Here, we **come into contact, and resonance, with the Solar Angel and Angel governing the Taurus Petal**. ◇ In the moments that follow, commune deeply **with the Solar Angel and Angel of Taurus assisting in the unfoldment of the inner Christ**. Allow the vital energy of *Their loving Presence, lighted Intelligence and specialized Powers* to move through you – "expanding your awareness" of the **unfolding Presence of the True Soul**. ◇ *Allow. OM*

◇ As "the Breath of Life pours through all the Centers", breathe in Taurean Light, "**the penetrating Light of the Path**," pouring through all the Centers. Follow the Life energy streaming through the Crown Center ... down the central spinal column – through the Ajna, Throat, Alta Major and Heart Centers ... continuing on through the lower centers – *gently conditioning every Center with new Life*. ◇ The energy will flow naturally on its own, a portion flowing through the minor centers in the feet into the earth "Blessing the Earth upon which we walk". ◇ The energy re-ascends up the etheric spinal column "returning *Home* whence it came" to the Crown, completing the divine circulatory flow.

– Forcing nothing, simply **allow**. For some the energy will flow **back up the central column to the Crown**; others may experience the returning energy as a **circular arc** in front and behind the body (as in Kriya Yoga) returning *home whence it came* to the Crown; others may experience a dual flow of energy flowing **simultaneously in all directions** as a great ovoid, or *torus* of dynamic circulating energy – a fountain of Life energy descending and ascending without cessation. Observe, breathe, allow. ◇ **In right timing, sound forth the Sacred Word, OM, confirming** the new vibration.

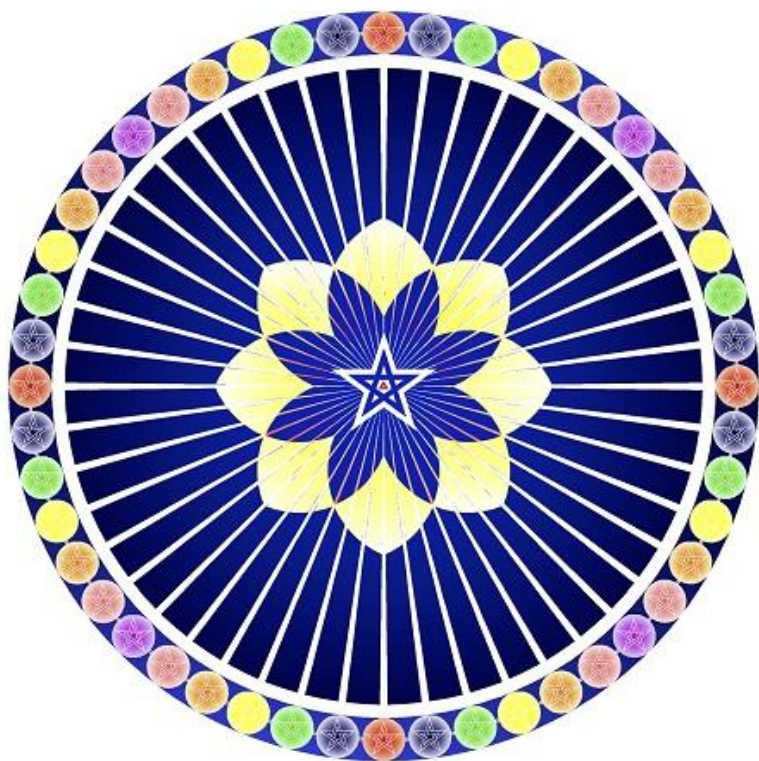
– Here within our own etheric body is a great Truth of the Pilgrim's journey, the Monad in extension, journeying forth deep into matter, and returning to the Father's Home in the Crown. ~ **BE and LIVE in the radiant flow of circulating energy – an everlasting Fountain of Life – the true "Perpetual Fountain of Youth"**. [Continue with Part III]

III. THE SOUL STAR GROUP – WORKING IN GROUP APPROACH TO DIVINITY THE SOUL IS GROUP CONSCIOUS

◇ In this enlivened, expanded state, we widen our awareness to see ourselves standing inside a large circle of *Participating Souls* – gathering as the “**Soul Star Group**” – *purposed* to work in “Group Approach to Divinity” with the “Great Ones” during these Full Moon periods. See all Souls herein gathered as *radiant spheres of Living Light, Love and Holy Will*.

Now, in one simultaneous movement, imagine extending a ray of love and light—Soul to Soul to all here gathered ... whilst *silently* (or softly) sounding the sacred Word, *OM*.

◇ We now *come into the Presence and resonance* with the “Great Potency of the Inner Groups” – within Whose Center stands the Christ. **His Star** – five-pointed, His number – **Eight**. Let us feel, sense, intuit the powerful emanations pouring forth from this Center.



It is through Love (the Heart) that we link with the Presence of the Christ and the Great Ones. Let us now extend Love and Light to the **Lord of Love** – the **CHRIST** and spiritual Hierarchy – **OM**

Sense now His Holy Presence emanating Light, Love and Holy Will to and through the Soul Star Group – and all consecrated Soul Groups and Souls therein. OM

◇ Aware of the energy field of the “Great Potency of the Inner Groups” – let us enter deeper still into the great sphere of illumining Light, all-pervading magnetic Love and purposeful Will – **stimulating** all Soul Ray qualities, virtues and Soul-Powers – extending far and wide, within–without, above–below.

In these inclusive alignments, united we stand with serving groups around the globe...*lifting, healing, redeeming, saving, illumining, visioning and directing* humanity and the lower Kingdoms of nature. ◇ Sounding the sacred Word, *OM*, *let us confirm the Christ vibration*. ‘In cooperation deep’ we join the Spiritual Hierarchy in manifesting the Plan of God.

◇ With this in Heart and Mind, let us sound the sacred word, *OM*, and *The Great Invocation in resonance with the Lord of Love and Spiritual Hierarchy*.



CONTEMPLATIONS *and* DIAMOND SOUL PRACTICES

DAY TWO

Illuminated Vision

“IF THINE EYE BE SINGLE, THY WHOLE BODY SHALL BE FULL OF LIGHT”

WORD OF THE SOUL: *“I See, and when the eye is opened, all is illumined”* (EP-I, 182/3)

SELECT one or more to work with for today:

◇ “In Taurus—Desire is transmuted into aspiration, darkness gives place to light and illumination, the eye of the Bull is opened which is the spiritual third eye, or the “single eye” of the New Testament. “If thine eye be single,” said the Christ, “thy whole body shall be full of light.” This single eye takes the place of the two eyes of the personal self. The attention of the man becomes focused upon spiritual attainment. He treads the Path of Discipleship”. (EA, 143) ◇ CONTEMPLATE

∞

◇ “The Master of all Masters has said, *“If thine eye be single, thy whole body shall be full of light”*. These words which He **enunciated reflects a principle underlying all creative work, leading to “power, light, vitality, and manifestation”**. **Such is the true procedure.**” (TWM, 558)

“... in each of the subtle bodies in the three worlds there is a corresponding point of focus, and the center between the eyebrows [the ajna center] is but the physical counterpart (for etheric matter is physical) of inner correspondences.” (TWM, 214)

CONTEMPLATE the above “principle underlying all creative work” and *what it leads to*.

∞

◇ “The center between the eyebrows, commonly called the third eye has a unique and peculiar function. As I have pointed out elsewhere, students must not confound the pineal gland with the third eye... The third eye **manifests** as a result of the vibratory interaction between the forces of the soul, working through the pineal gland, and the forces of the personality, working through the pituitary body. ***These negative and positive forces interact, and when potent enough produce the light in the head.*** Just as the physical eye came into being in response to the light of the sun, ***so the spiritual eye equally comes into being in response to the light of the spiritual sun.*** **As the aspirant develops he becomes aware of the light.** I refer to the light in all forms, veiled by all sheaths and expressions of the divine life, and not just to the light within the aspirant himself. **As his awareness of this light increases so does the apparatus of vision develop, and the mechanism whereby he can see things in the spiritual light comes into being in the etheric body.**” TWM, 212/3

REFLECT upon these lighted statements. Allow them to impress your consciousness. Consider the spiritual eye opening as a response to the “light of the spiritual sun” – ever present in you as Spirit.

◇ **CONTEMPLATE:** *“If thine eye be single, thy whole body shall be full of light” – is a confluence of three energies – the Crown, Ajna and Alta Major centers.*

◇ **REFLECTION:** “Higher aspirations” – “willed pursuits” and “values lived” naturally and safely open the spiritual Eye. The activity of the “spiritual Eye” illumines, enlivens, and spiritualizes our responses in daily living. Let us remember what truly cultivates expansion in consciousness ~

"You must ... bear in mind that these centres are brought into activity by the cultivation of certain major virtues, and not by meditation or concentration upon the centres. They [*the centers*] are brought automatically into the needed radiatory condition by right living, high thinking and loving activity. **These virtues may seem to you dull and uninteresting, but they are most potent and scientifically effective in bringing the centres into the desired radiatory activity.** When the task is done, and when all the centres are living spheres of outgoing, radiatory activity, they swing into each others' orbit so that the initiate becomes a centre of living light and not a composite of seven radiant centres. **Think on this.**"
(Telepathy and the Etheric Vehicle, 174/5)

◇ On the Lighted Way, Alignment and Cultivation generates the fast path.

Cultivate (True) right living
Cultivate (True) high thinking
Cultivate (True) loving activity

In light of the above, what higher aspirations, what spiritual-will pursuits come into view? What will you cultivate to express?

Is the inner Eye of Vision changing your perception?

◇ As the Light of Taurus pours through the group, the Group Disciple *stands expectant. We forward move deeper into the Love and Light and Purposeful Will of Hierarchy.*

On this day, LET US stand with deep expectancy for the Blessings of the Radiant One



OM