

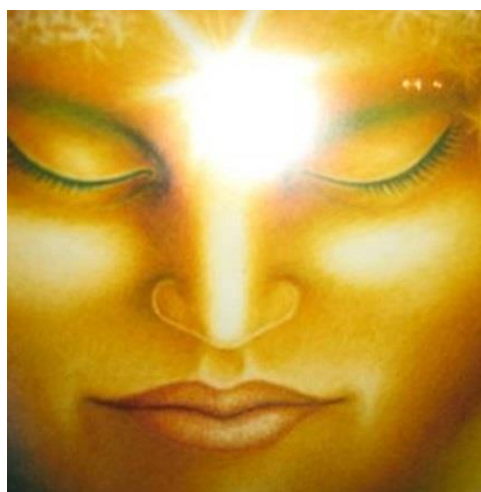
TAURUS 7-Day SOLAR FULL MOON RITUAL

DAY SIX

MEDITATION AND DIAMOND SOUL PRACTICES

In Service of the Christ and the Great Ones for the Flowering of Humanity

REGISTRATION AND DISTRIBUTION



In the days following a Solar Full Moon, we extend in service what was registered and received. The Holy Way of the Buddha and the Christ is carried forward. In Aries Christ anchored the Will in the Matrix of Love, and in Taurus it is strengthened by the intense Light of the Buddha. Distribution of these sacred energies begins with ourselves, our groups, our environment, our world – wherever there is a need to which we are called to serve.

Subtle expansions in consciousness change our sense perceptions, allowing us to 'see' clearly and wholly – to sense and experience new qualities, strengths and powers of the Soul released through the matrix of the personality instrument. More importantly, awareness of “Being” comes closer to being known. Subtle gains are accentuated during this time, and the “Mind of Christ” gains power. Let us remember that the true “Mind of Christ” is the full triune Soul-Self of higher Mind, higher Love and Holy Will.



A SIMPLE OPENING RITUAL



Let us *begin where we are* with a conscious breath of Life –

Light a Light unto the Soul, symbolically affirming the Soul heart-mind-brain awareness. Sounding a bell tone, or an OM, we summon the Angels. As the vibrations from the inner soul world flows through our consciousness, we step into the Peaceful Presence of the Soul – no past, no future, only now. Affirm:

~ “I am as God Created Me” – The Triune Soul—a Living Divine Flame of Spirit ~

OM

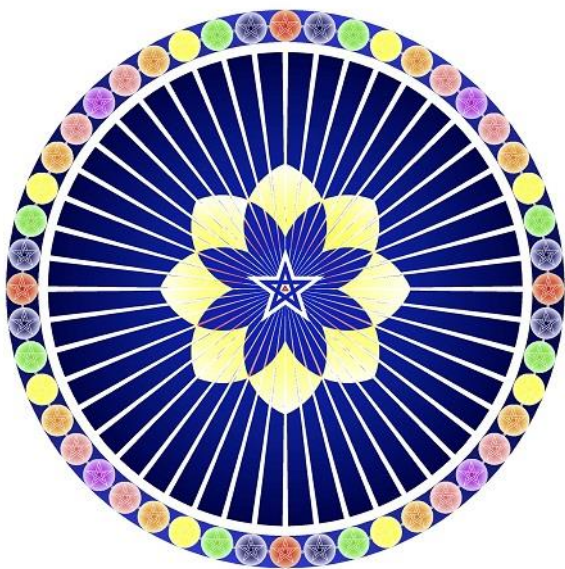
INDEPTH MEDITATION: Stepping into the Peaceful Presence of the Soul

◇ Remembering “**the Breath is the Life pouring through all the Centers**”, we stand in the Glory and Beauty of the Cosmos as the energy of Taurus pours through “the Heart of the Sun – the Son of Divine Love”... and through the great Entity we call Space. Let us move into *That* space where the **Great Breath is Breathing you – giving of Itself as life-giving vitality ... as luminous Light ... and universal Love – the cosmic Christ pouring through the Solar System, the Earth and every conscious Chalice.**

◇ Let us move into the **peaceful presence of the Soul** and the wider Soul field as “**The Breath of Life**” **pours through all the centers**, sounding the sacred Word OM. ◇ With intensified spiritual aspiration, we reach high into Soul Light silently sounding the sacred WORD, OM and breathing in atoms of higher vibration ... irradiating the mind, infusing the emotions, suffusing the physical etheric ... and our environment, near, far and wide.

◇ Let us now attune with, and welcome, the Solar Angel and accompanying Angel of Taurus governing the 2nd petal of the “Heart in the Head Lotus”. We Pause, consciously deepening our alignment ... preparing for the ‘energy adjustments’ of the Angel of the Presence, as purer atoms of “light and love and holy will” from the higher planes of the Soul pour through all the Centers, loosening and discarding atoms of lower vibration. ◇ Sounding the sacred **WORD**, OM (silently or aloud), we affirm the sacred alchemy taking place within us. As the energy returns *Home* whence it came in a great fountain of circulating light, we sound an OM to affirm and seal in the new vibrations.

~ THE SOUL IS GROUP CONSCIOUS ~



◇ In the energy field of Taurus, as conscious Souls, move into the prepared and loving field of the Soul Star Group. ◇ In one unified solar breath alignment, extend ('ray forth') Soul Light to all herein gathered – One to All and All to One ... creating a *living radiant field* of Lighted Love and unified Soul Group vibration. OM.

As One Group Soul, visualize extending a beam of light to The Christ ... as you come into resonance with His felt Presence. Pausing in the auric Presence of His Holy Field, absorb the emanations pouring forth from His Being ... suffusing, lightening, lifting and aiding. The Christ, ever aligned with the Lord of the World, knows the Will of the Father – and we through Him can sense a touch of that

Shambhalic Will-to-Good.

◇ Through these inclusive, unifying group alignments, with the inner eye of the Soul, energy lines and waves of light can be seen linking Soul Groups around the Globe—vibrating in resonance with the greater Group of Groups. ◇ Think now (mentally or spoken) of Soul groups you know and love,

affirming the greater Group Soul. ◇ Pause now in *the living Presence* of this synthesized energy Field that is “the great Potency of the Inner Groups”. OM

With the energies coursing through the Soul Star Group, let us turn upon our axis to face the world – extending that which is pouring through us – stimulating Good Will in all our groups, group members, and in all of Humanity.

~ Sound the Great Invocation ~

◇ We are affirmed in the Master’s words of the “**joy of participation in the Masters’ plans**” knowing “**all is well that associates you closely with Them.**” (TWM, 368/9)

In Pisces, we leave the “Fathers home, and turning back, we save”. In Aries, we “come forth and from the plane of mind we rule”. In Taurus, we venture forth in the “Penetrating Light of The Path” that bestows Illumination and Vision in line with the Will of God and the Plan of God – for building a new World – a new Heaven on Earth.



DAY 6 of DISTRIBUTION, REFLECTION and DIAMOND SOUL PRACTICE

Day Six of the Full Moon Ritual process continues with impression and distributing Taurus energies. Today we emphasize the **group** level of consciousness and service activity, remembering “**the Soul is group conscious**”.

Our immersion in the life energies of Taurus brings forward two primary “Ideas” to focus our attention and thoughtful direction upon group service during this *second day of distribution*.

The first Idea relates to group motivation: what kind of desire, incentive or will is driving us? Desire corresponds with three phases of “will, Will, WILL” animating group progress.

The second Idea relates to the desire or higher will that motivates ideals and goals of national, international and world groups (explored further on the final day of distribution).

“I would like here to call your attention to the fact that **this sign is a synthetic sign** in the sense that **it brings expression of an inner urge** of some definite nature upon the physical plane. This it does, because its basic quality **demonstrates as desire** in the mass of men and **as will or directed purpose in the disciple or the initiate**. It manifests as **stubbornness** in the average man (and this is literally willful adherence to personality aims) or as **intelligently expressed will—actuated by the impulse of love**—in the advanced man. **This connotes adherence to soul purpose.**” (EA, 375)

Notice which are operative most in you, and which are operative in your groups. When brought into the light of conscious awareness, the Soul can begin to work on them.

Consider: “what is the nature of the *purpose* of the group?” Is it primarily oriented toward personal benefit, material or monetary gain, or does it aim to express some greater Soul value or Good, in service to others of the Plan? The more noble the purpose, the benefit brought to others demonstrates as sustained group cohesion (group love), a commitment to higher achievement (group will), and expressed spiritual livingness in the group. The response to “soul purpose” is the growing influence of Taurus in the group life of humanity, leaning toward higher Soul values. ◇ Reflect.

Groups examining their values is another expression of the Taurean influence. Are the groups’ values based in the love of a greater good? Or are they materially goal-oriented? Clearly a measure of both are necessary on the physical plane, yet noble purpose and higher desire must be the underlying incentive to attract the interest of soul-infused individuals.

“The Taurian influence must now be regarded as being of **exceeding potency today**, particularly from the angle of the **subjective spiritual values**; it is Taurus which is the ruler and the guiding influence of that which is occurring everywhere.” (EA, 375)

◇ Reflect on the groups of which you are a part or which you share responsibility in serving, influencing or guiding. Do you see constructive, intelligent lines of expression and goodwill? Like a diseased tree ‘falling’ in the forest, separative actions, non-cooperation, stubbornness, and ill-will cause ‘falls’ in group life. Yet under the steady pressure of Good-Will, these eventually ‘fall away’. When goodwill is a natural tendency, a group rises in harmony, cooperation, and joy. The “beauty of group work” can then become a norm.

“**Goodwill is the simplest expression of true love** and the one most easily understood. The use of goodwill in connection with the problems with which humanity is faced **releases the intelligence along constructive lines; where goodwill is present, the walls of separation and of misunderstanding fall.**” (POH,118)

“**He (the Christ) anchored on Earth “the Will of God in the matrix of love.”** (R&I, 527)
Spiritual Values are expressions of Love. Goodwill practices and agreements that are in accord with higher values are gates through which intelligent Love and God’s Will can flow.

◇ The energies of Taurus pour through Venus and Vulcan. The “eye” of the Ajna center is a directing agent for altruistic group vision and refined group activity in line with the Soul.

Think of groups or relationships within a group which you admire that appear to be operating at a higher level. Look deep to identify the values and principles being lived by this group.

Recognize “**directed purpose**” and “**adherence to soul purpose**” as the rule of “**intelligently expressed will—actuated by the impulse of love**”.

Be inspired by these higher ways of working together. Using the eye of vision, direct and communicate higher values and ways of working together in your groups and circles – in the will and matrix of Love.

OM